

all data without guarantee - Accuracy: +/-15%

xcopterCalc - Multicopter Calculator

News | Toolbox | Easy View | Help | Tutorial | Submit Specs | Language: english

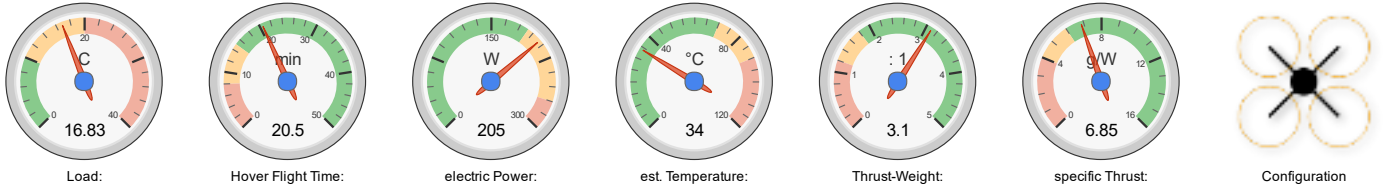
General Motor Cooling: excellent # of Rotors: 4 Model Weight: 500 g without Drive Frame Size: 333 mm FCU Tilt Limit: no limit Field Elevation: 305 m ASL Air Temperature: 21 °C Pressure (QNH): 1013 hPa

Battery Cell Type (Cont. / max. C) - charge state: custom - normal Configuration: 3 S 1 P Cell Capacity: 5200 mAh max. discharge: 90% Resistance: 0.006 Ohm Voltage: 3.7 V C-Rate: 10 C cont. 20 C max Weight: 111 g 3.9 oz

Controller Type: custom Current: 18 A cont. 30 A max Resistance: 0.007 Ohm Weight: 5.3 g Accessories Current drain: 0 A Weight: 0 g

Motor Manufacturer - Type (Kv): RCinPower QAV 2206-1900 (1900) KV (w/o torque): 1900 rpm/V no-load Current: 0.35 A @ 10 V Limit (up to 15s): 270 W Resistance: 0.105 Ohm Case Length: 31 mm # mag. Poles: 14 Weight: 29 g 1 oz

Propeller Type - yoke twist: APC SlowFly SF Diameter: 8 inch Pitch: 3.8 inch # Blades: 2 PConst / TConst: 1.11 / 1.0 Gear Ratio: 1 : 1 calculate



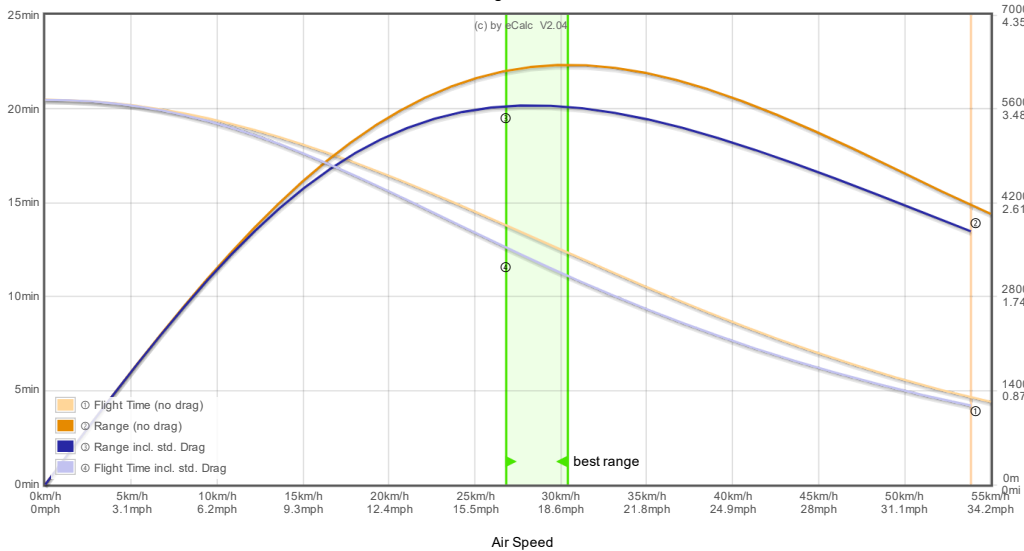
Remarks:

Battery Load: 16.83 C Voltage: 9.53 V Rated Voltage: 11.10 V Energy: 57.72 Wh Total Capacity: 5200 mAh Used Capacity: 4680 mAh min. Flight Time: 3.2 min Mixed Flight Time: 12.6 min Hover Flight Time: 20.5 min Weight: 333 g 11.7 oz	Motor @ Optimum Efficiency Current: 5.76 A Voltage: 10.64 V Revolutions*: 18996 rpm electric Power: 61.3 W mech. Power: 54.1 W Efficiency: 88.2 %	Motor @ Maximum Current: 21.87 A Voltage: 9.37 V Revolutions*: 13143 rpm electric Power: 205.0 W mech. Power: 149.5 W Power-Weight: 806.1 W/kg 365.6 W/lb Efficiency: 72.9 % est. Temperature: 34 °C 93 °F	Motor @ Hover Current: 3.43 A Voltage: 10.83 V Revolutions*: 6767 rpm Throttle (log): 30 % Throttle (linear): 41 % electric Power: 37.1 W mech. Power: 28.7 W Power-Weight: 149.6 W/kg 67.9 W/lb Efficiency: 77.4 % est. Temperature: 23 °C 73 °F specific Thrust: 6.85 g/W 0.24 oz/W	Total Drive Drive Weight: 517 g 18.2 oz Thrust-Weight: 3.1 : 1 Current @ Hover: 13.71 A P(in) @ Hover: 152.2 W P(out) @ Hover: 115.0 W Efficiency @ Hover: 75.5 % Current @ max: 87.49 A P(in) @ max: 971.2 W P(out) @ max: 598.1 W Efficiency @ max: 61.6 %	Multicopter All-up Weight: 1017 g 35.9 oz add. Payload: 1682 g 59.3 oz max Tilt: 68 ° max. Speed: 58 km/h 36 mph est. rate of climb: 11.5 m/s 2264 ft/min Total Disc Area: 12.97 dm² 201.04 in² with Rotor fail:
---	--	--	---	---	--

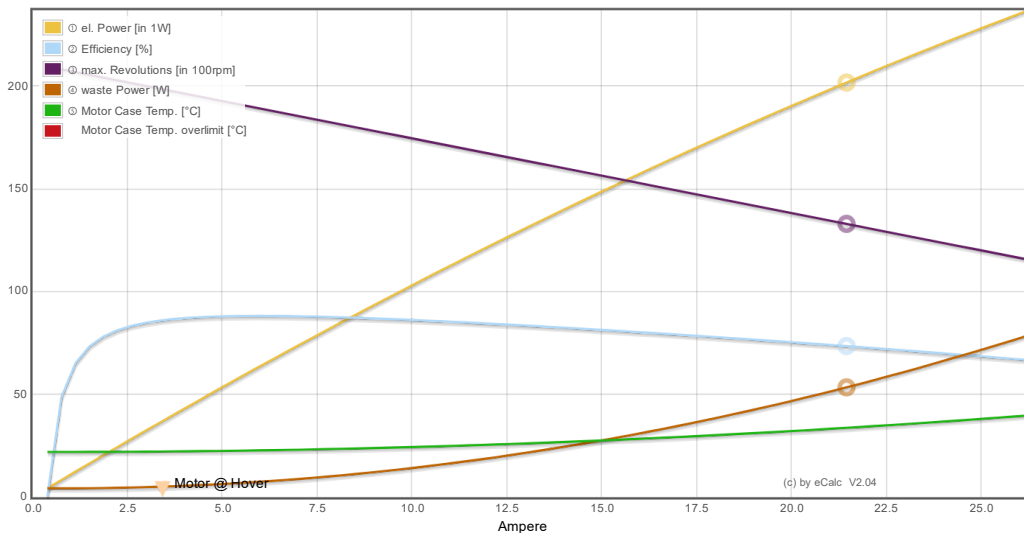
share

add to >> Download .csv (0) << clear

Range Estimator



Motor Characteristic at Full Throttle



Important Note: Before flight recheck your max. current! If your Current, el. Power or RPM are over the manufacturers limits your motor, controller and/or battery may take damage! Verify before flight by measurement!

for printing use Landscape format
* The manufacturer limitation is NOT monitored
** Testdata with reduced accuracy